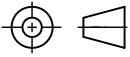


THIRD ANGLE PROJECTION

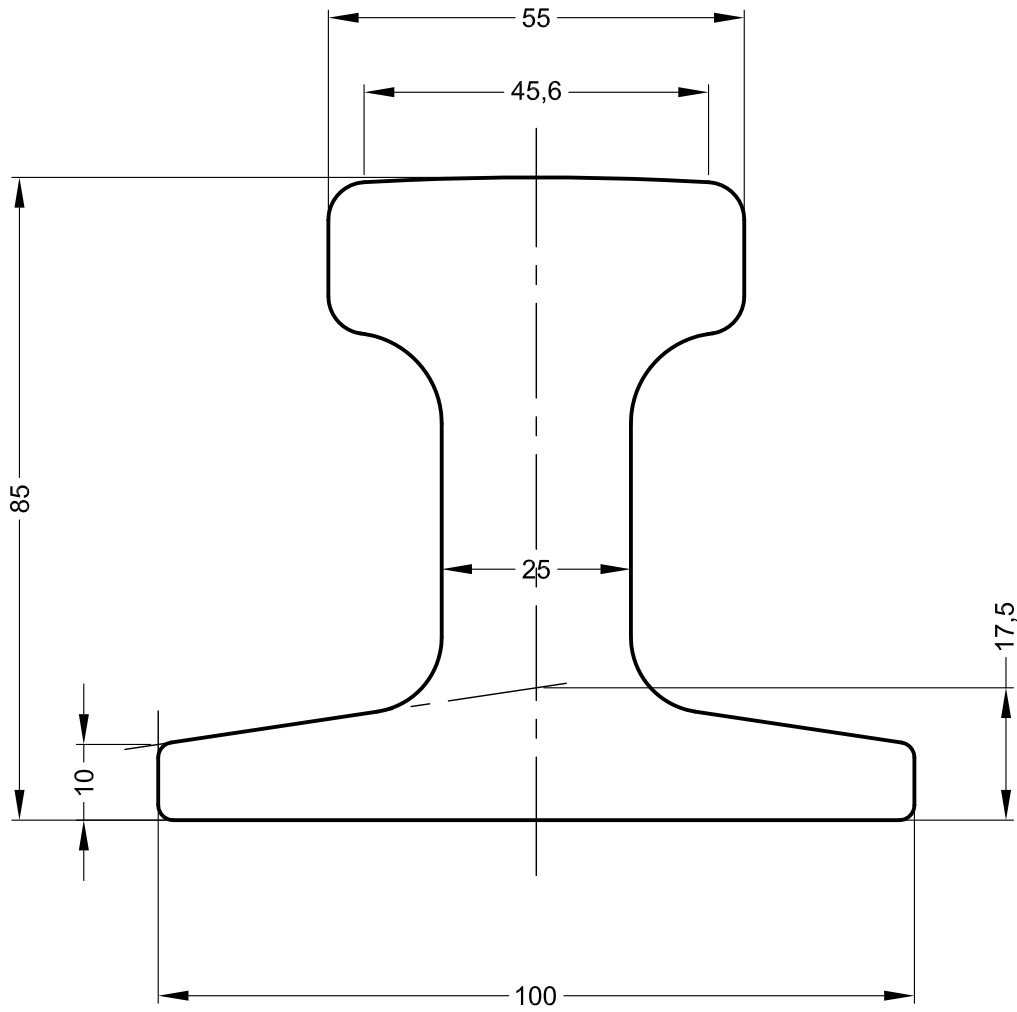


FOR GUIDANCE ONLY  
THIS INFORMATION HAS BEEN  
PROVIDED IN GOOD FAITH BUT  
SPECIFICATIONS DO CHANGE

Edition B

Date 06/07/10

Scale 1:1 @ A4



NOTE: THE PROPERTIES SPECIFIED BELOW HAVE BEEN CALCULATED USING AUTOCAD SOFTWARE AND ARE ACCURATE AT THE TIME OF THIS DRAWING ISSUE. THESE FIGURES MAY DIFFER SLIGHTLY FROM THOSE PUBLISHED IN THE STANDARD FOR THE RAIL.

**GANTRAIL**<sup>®</sup>

Rail Mounting Systems

Gantry Railing Limited  
SUDMEADOW ROAD, HEMPSTED  
GLOUCESTER GL2 5HG, ENGLAND  
Tel: (01452)300688 Fax (01452)300198  
International Dialling # 44.1452  
<http://www.gantrail.com>  
E-Mail: [info@gantrail.com](mailto:info@gantrail.com)

THE TECHNICAL DATA CONTAINED IN THIS DRAWING IS THE PROPERTY  
OF GANTRY RAILING LIMITED AND IS SUBJECT TO COPYRIGHT ©

Rail Designation	JKL 55
Rail Origin	CZECH REPUBLIC
Standard	UNKNOWN
Area of section	3756 mm <sup>2</sup>
Calculated Mass	29.5 kg/m
Neutral Axis to base	38.4 mm
Moment of Inertia	I <sub>xx</sub> 312 cm <sup>4</sup> I <sub>yy</sub> 133 cm <sup>4</sup>

1

4