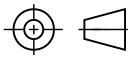


1 2 3 4 5 6 7 8

THIRD ANGLE PROJECTION



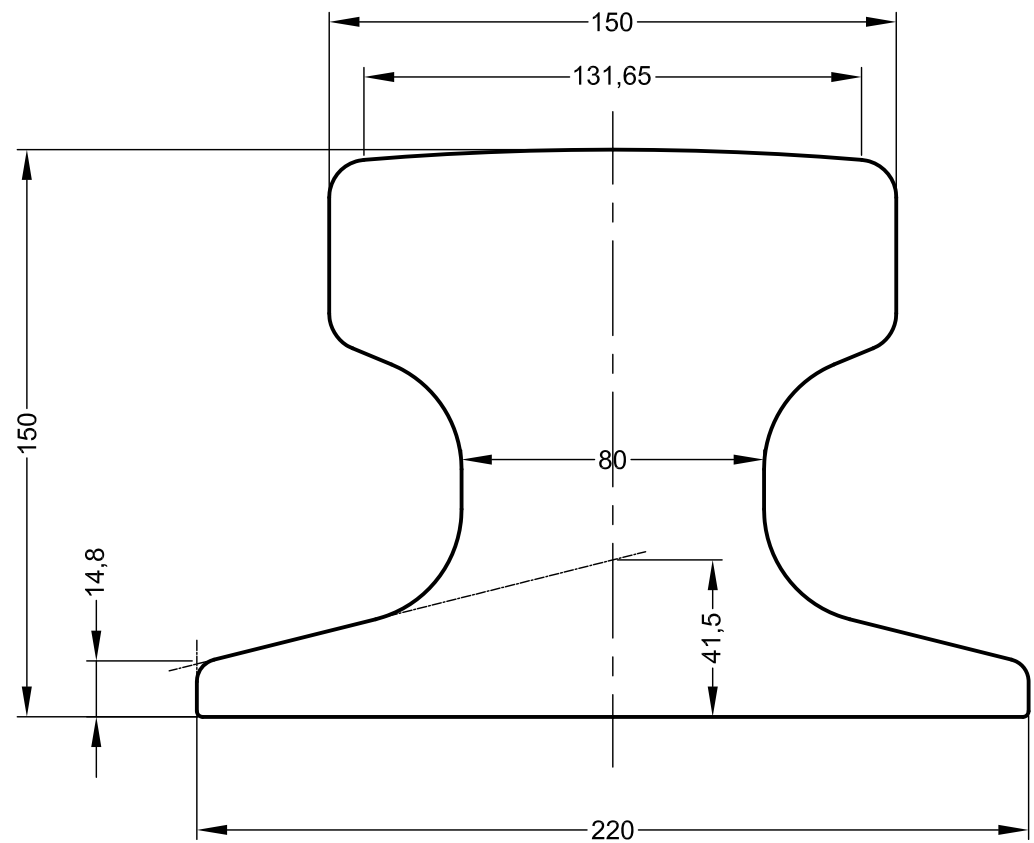
A A

B B

C C

D D

E E



NOTE: THE PROPERTIES SPECIFIED BELOW HAVE BEEN CALCULATED USING AUTOCAD SOFTWARE AND ARE ACCURATE AT THE TIME OF THIS DRAWING ISSUE. THESE FIGURES MAY DIFFER SLIGHTLY FROM THOSE PUBLISHED IN THE STANDARD FOR THE RAIL.

<p>GANTRAIL[®]</p> <p>Rail Mounting Systems</p> <p>THE TECHNICAL DATA CONTAINED IN THIS DRAWING IS THE PROPERTY OF GANTRY RAILING LIMITED AND IS SUBJECT TO COPYRIGHT ©</p>	<p>Gantry Railing Limited SUDMEADOW ROAD, HEMPSTED GLOUCESTER GL2 5HG, ENGLAND Tel: (01452)300688 Fax (01452)300198 International Dialling # 44.1452 http://www.gantrail.com E-Mail: info@gantrail.com</p>	Rail Designation	A150		
		Rail Origin	GERMANY	Edition	B
		Standard	DIN	Date	06/07/10
		Area of section	19311 mm ²	Scale	1:2 @ A4
		Calculated Mass	150.3 kg/m	FOR GUIDANCE ONLY THIS INFORMATION HAS BEEN PROVIDED IN GOOD FAITH BUT SPECIFICATIONS DO CHANGE	
		Neutral Axis to base	73 mm		
Moment of Inertia	I _{xx} 4413 cm ⁴ I _{yy} 3652 cm ⁴				

F F

1 2 3 4 5 6 7 8