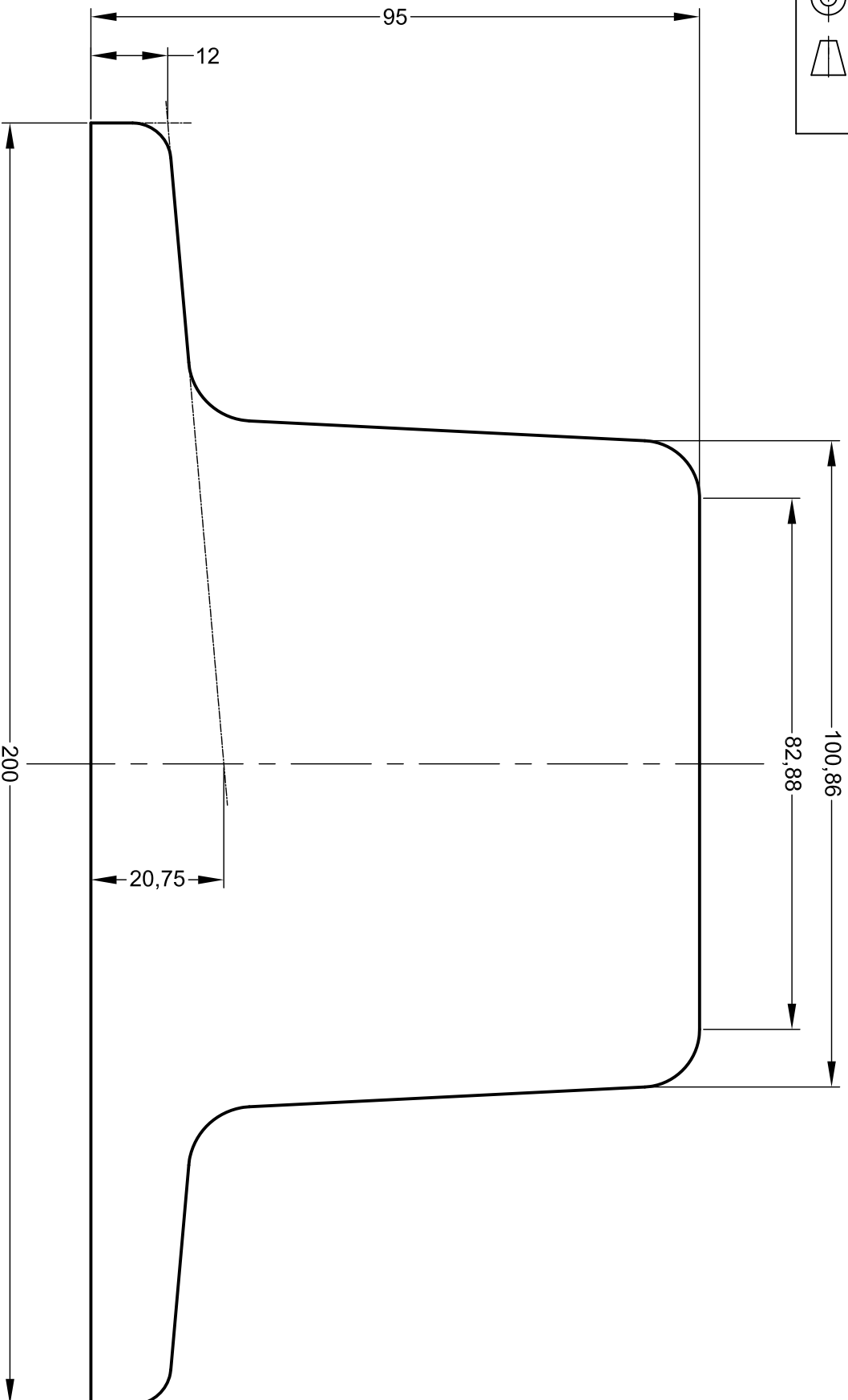


THIRD ANGLE PROJECTION



NOTE: THE PROPERTIES SPECIFIED BELOW HAVE BEEN CALCULATED USING AUTOCAD SOFTWARE AND ARE ACCURATE AT THE TIME OF THIS DRAWING ISSUE. THESE FIGURES MAY DIFFER SLIGHTLY FROM THOSE PUBLISHED IN THE STANDARD FOR THE RAIL.

GANTTRAIL[®]

Rail Mounting Systems

THE TECHNICAL DATA CONTAINED IN THIS DRAWING IS THE PROPERTY OF GANTTRY RAILING LIMITED AND IS SUBJECT TO COPYRIGHT ©

Gantry Railing Limited
 SUDMEADOW ROAD, HEMPSTED
 GLOUCESTER GL2 5HG, ENGLAND
 Tel: (01452)300688 Fax (01452)300198
 International Dialling # 44, 1452
<http://www.gantrrail.com>
 E-Mail: info@gantrrail.com

Rail Designation	ISCOR 88	Edition	B
Rail Origin	SOUTH AFRICA	Date	06/07/10
Standard	UNKNOWN	Scale	1 : 1 @ A4
Area of section	11217 mm ²	FOR GUIDANCE ONLY THIS INFORMATION HAS BEEN PROVIDED IN GOOD FAITH BUT SPECIFICATIONS DO CHANGE	
Calculated Mass	88,1 kg/m		
Neutral Axis to base	42,1 mm		
Moment of Inertia	I _{xx} 921 cm ⁴ I _{yy} 1664 cm ⁴		