

3120/15

Gantrail Bolted Fixing

www.gantrail.com



Gantrail[®]

A world of crane rail expertise

3120/15

The **GANTRAIL 3120/15** adjustable crane rail clip is designed to fix heavy rails in the most arduous applications. It can withstand a horizontal force from the rail of 75kN (7.6 tonnes). Its low profile allows it to be used with cranes that are fitted with guide rollers.

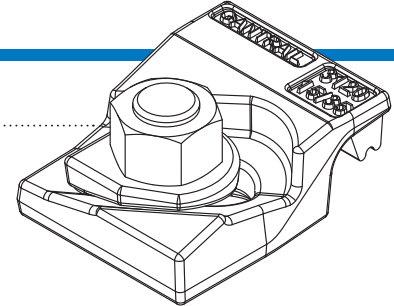
SPECIFICATIONS:

| BOLT GRADE | 8.8 | 10.9 |
|--------------------|-----|------|
| MAX SIDE LOAD (kN) | 75 | 100 |
| BOLT TORQUE (Nm) | 390 | 600 |

15mm HORIZONTAL RAIL ADJUSTMENT

DIMENSIONS (mm):

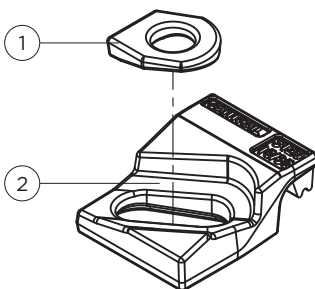
| REF No. | X | Y (FULL NUT) | Y (THIN NUT) | Z | WEIGHT kg |
|------------|----|--------------|--------------|----|-----------|
| 3120/15/35 | 35 | 45 | 40 | 23 | 0.70 |
| 3120/15/40 | 40 | 50 | 45 | 30 | 0.83 |



FEATURES

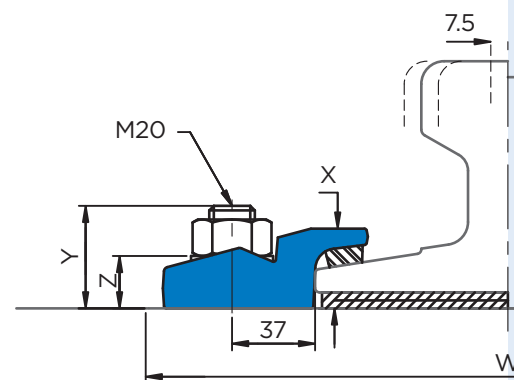
- The proven design has been used successfully for many years throughout the world.
- The clip is bolted to the rail support.
- The two main parts are locked together on tightening the nut.
- A special vulcanised rubber block applies a controlled force to the rail.

COMPONENTS

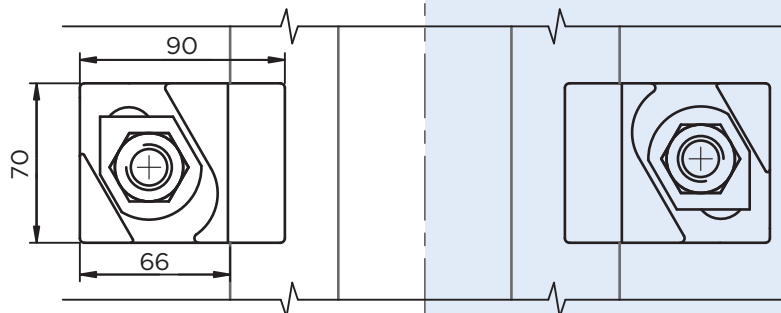


1. Special washer
2. Clip with integral rubber block

1 RAIL WITH PAD



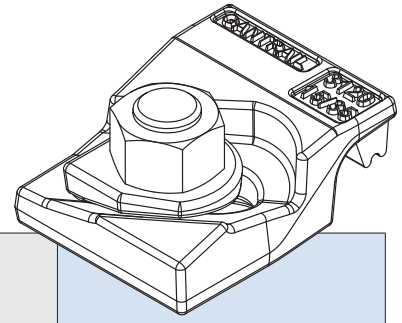
2 RAIL WITHOUT PAD

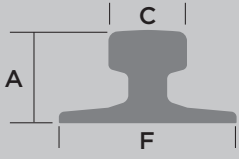


Minimum assembly width - $W = \text{Rail width (F)} + 147\text{mm}$

3120/15

Gantrail Bolted Fixing



|  | F mm | C mm | A mm | 1. CLIP REFERENCE FOR RAIL WITH PAD | 2. CLIP REFERENCE FOR RAIL WITHOUT PAD |
|---|---------|---------|---------|--|---|
| A 65 | 175 | 65 | 75 | 3120/15/35 | 3120/15/35 |
| A 75 | 200 | 75 | 85 | 3120/15/35 | 3120/15/35 |
| A 100 | 200 | 100 | 95 | 3120/15/35 | 3120/15/35 |
| S 33 | 105 | 58 | 134 | 3120/15/35 | 3120/15/35 |
| S 41 | 125 | 67 | 138 | 3120/15/35 | 3120/15/35 |
| S 49 | 125 | 67 | 149 | 3120/15/35 | 3120/15/35 |
| S 54 | 125 | 67 | 154 | 3120/15/35 | 3120/15/35 |
| 56 E 1 | 140 | 70 | 159 | 3120/15/35 | 3120/15/35 |
| MRS 87 A (PRI85R) | 152 | 102 | 152 | 3120/15/40 | 3120/15/35 |
| AFNOR 46 | 134 | 62 | 145 | 3120/15/35 | 3120/15/35 |
| ISCR 60 | 105 | 60 | 105 | 3120/15/35 | 3120/15/35 |
| ISCR 80 | 130 | 82 | 130 | 3120/15/35 | 3120/15/35 |
| QU 70 | 120 | 70 | 120 | 3120/15/35 | 3120/15/35 |
| QU 80 | 130 | 80 | 130 | 3120/15/35 | 3120/15/35 |
| JIS 37 | 122 | 63 | 122 | 3120/15/35 | 3120/15/35 |
| 41 kg AS | 127 | 65 | 136.5 | 3120/15/35 | 3120/15/35 |
| 50 kg AS | 127 | 70 | 154 | 3120/15/35 | 3120/15/35 |
| 53 kg AS | 146 | 70 | 157 | 3120/15/35 | 3120/15/35 |
| UIC 54 | 140 | 70 | 159 | 3120/15/35 | 3120/15/35 |
| UIC 60 | 150 | 72 | 172 | 3120/15/35 | 3120/15/35 |

This clip can be used for a wider selection of rails than illustrated.

Please contact GANTRAIL for the full range of possible rails. All rails can be fastened with bolted or welded base clips. GANTRAIL may change or improve their products and also alter specifications without notice.

INSTALLATION INSTRUCTIONS:

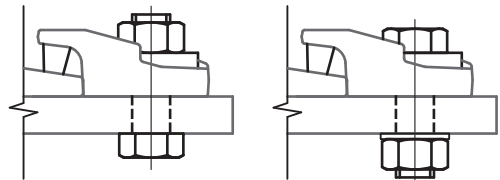
The hexagon headed fixing bolt can be inserted from above or below the supporting structure – see adjacent configurations.

If it is desired to fix the clip with a welded stud, this may be possible. Please consult GANTRAIL for guidance.

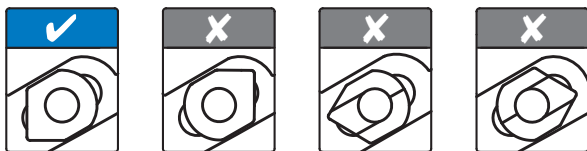
TIGHTENING TORQUE
Grade 8.8 bolt 390Nm
Grade 10.9 bolt 600Nm

Please contact GANTRAIL, for full installation instructions.

BOLT CONFIGURATIONS



POSITIONING OF SPECIAL WASHER



A world of crane rail expertise.

www.gantrail.com



Gantry Railing Ltd
Unit 11A
Barnett Way
Barnwood
Gloucester GL4 3QA
United Kingdom

Tel: +44 (0) 1452 300688
E-mail: info@gantrail.com



3120/15/DO/01/25