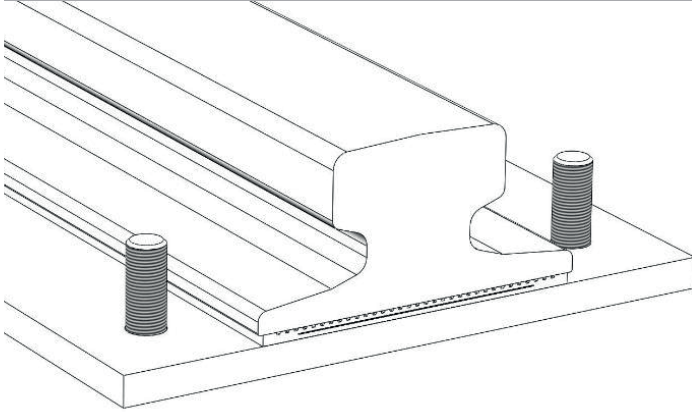


25 Series Clips

Fitting Instructions

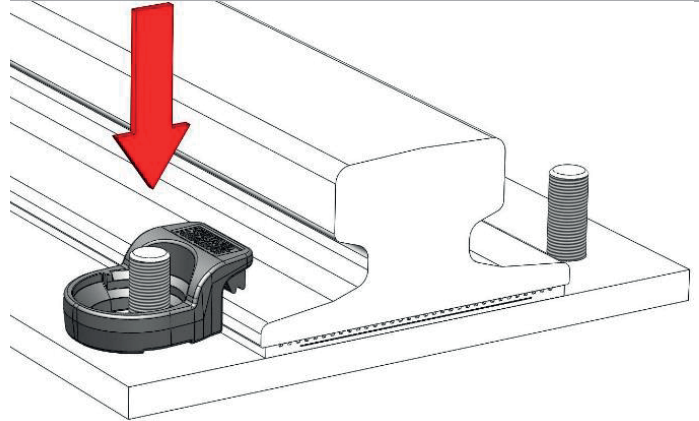
These instructions to be read in conjunction with product datasheet, available from www.gantrail.com.

FIGURE 1



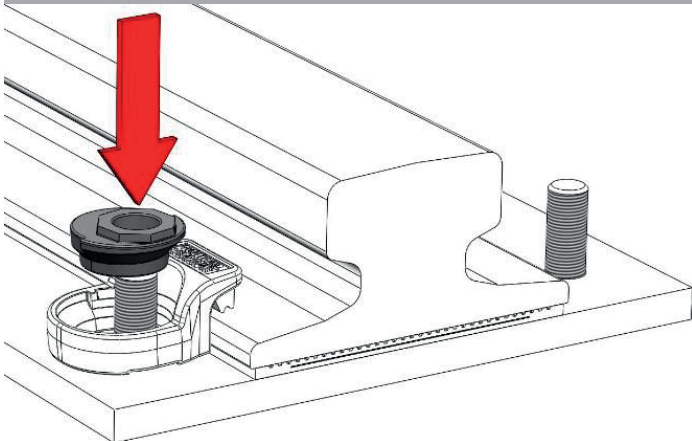
Insert bolt through hole in rail supporting structure.

FIGURE 2



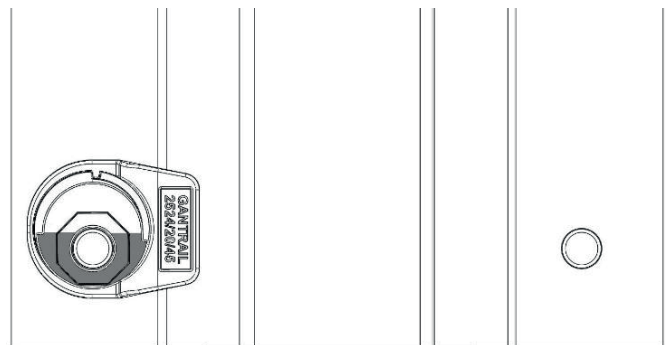
Place clip body over bolt.

FIGURE 3



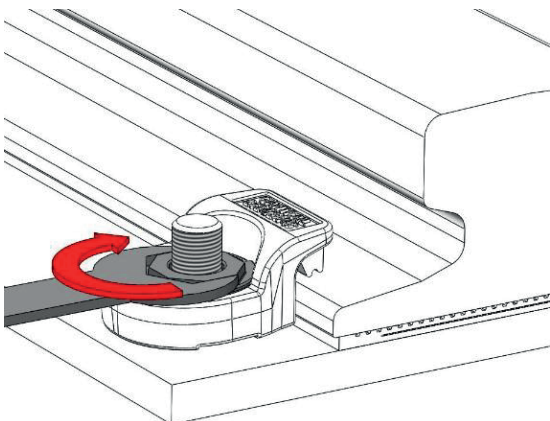
Place cam over bolt.

FIGURE 4



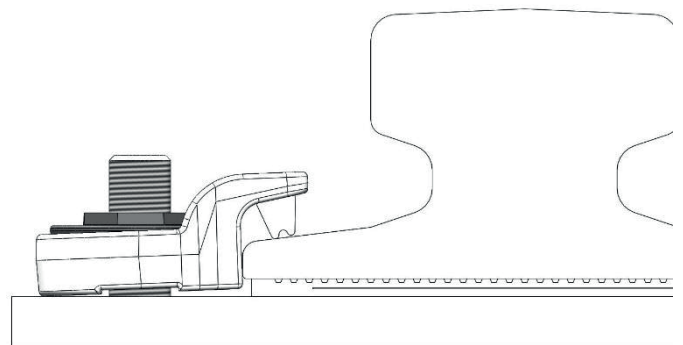
IMPORTANT : Ensure bolt is positioned in right-hand half of cam.

FIGURE 5



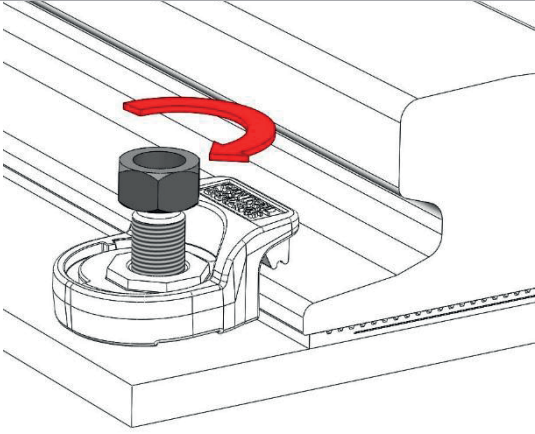
Using a C spanner, rotate cam clockwise to move clip body into metal-to-metal contact with bottom flange of rail.

FIGURE 6



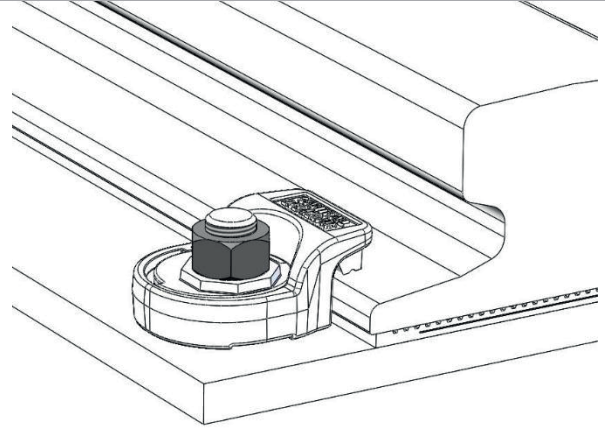
Clip in metal-to-metal contact with bottom flange of rail.

FIGURE 7



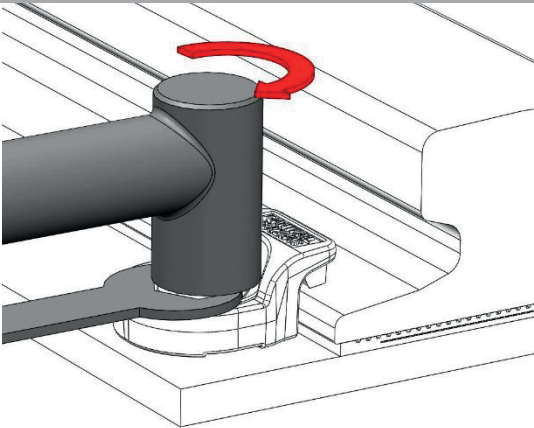
Run nut down bolt.

FIGURE 8



Nut to make full contact with cam.

FIGURE 9



Whilst maintaining clockwise pressure with C-spanner, tighten nut to required torque given on clip datasheet.

A world of crane rail expertise.

www.gantrail.com



Gantry Railing Ltd
Unit 11A
Barnett Way
Barnwood
Gloucester GL4 3QA
United Kingdom

Tel: +44 (0) 1452 300688
E-mail: info@gantrail.com

