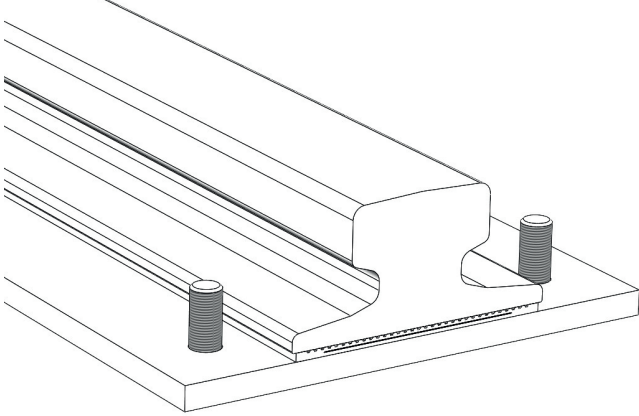


# 4 Series Clips

## Fitting Instructions

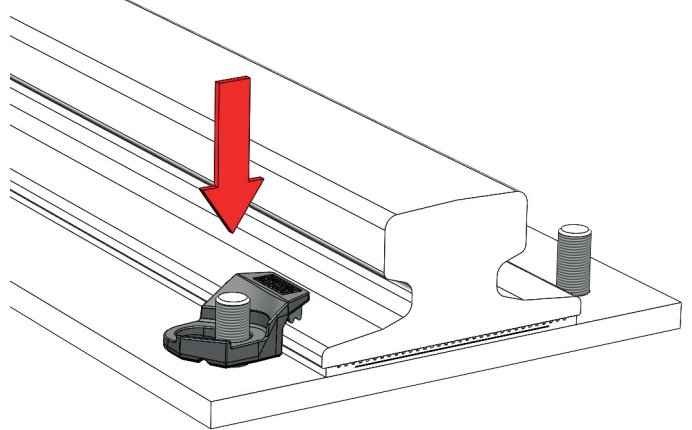
These instructions to be read in conjunction with product datasheet, available from [www.gantrail.com](http://www.gantrail.com).

FIGURE 1



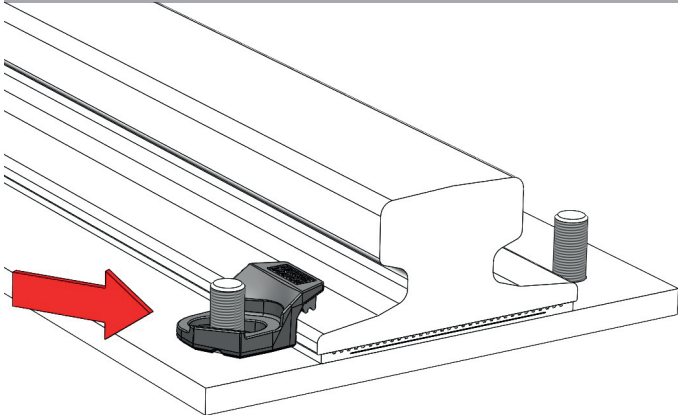
Insert bolt(s) through hole in rail supporting structure.

FIGURE 2



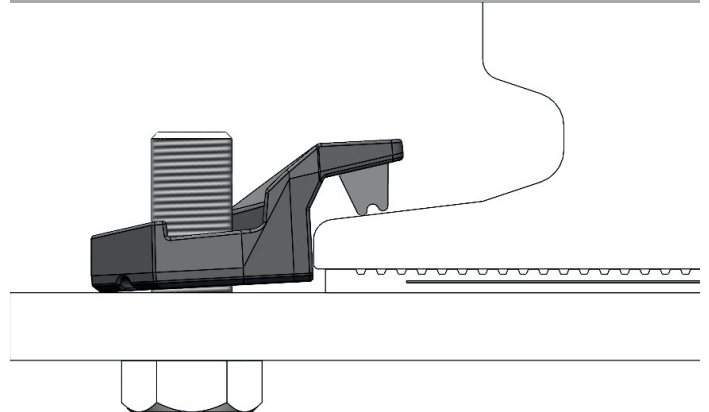
Place clip body over bolt(s) with rubber 'nose' resting on upper surface of bottom of rail.

FIGURE 3



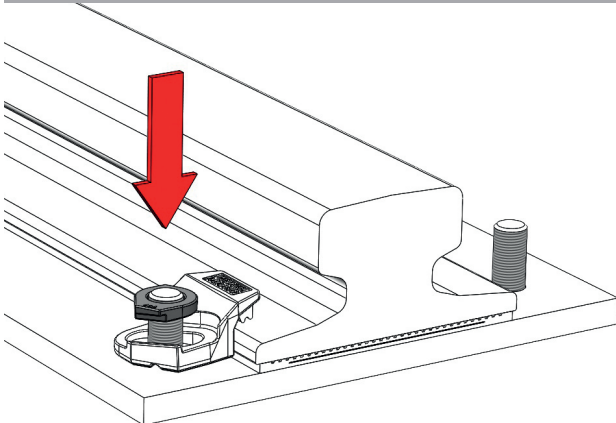
Move clip into metal to metal contact with bottom edge of rail.

FIGURE 4



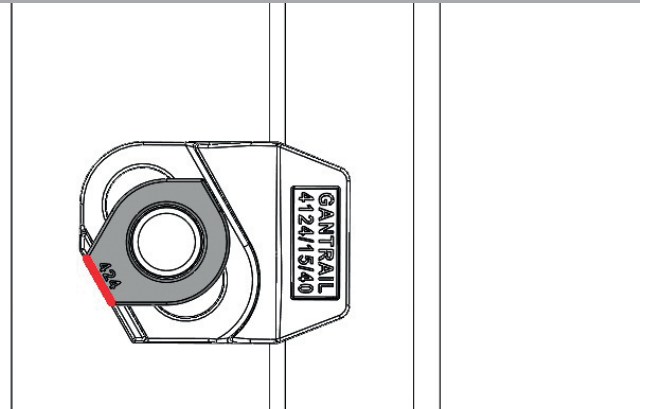
Bottom face of clip will not be in full contact with rail support.

FIGURE 5



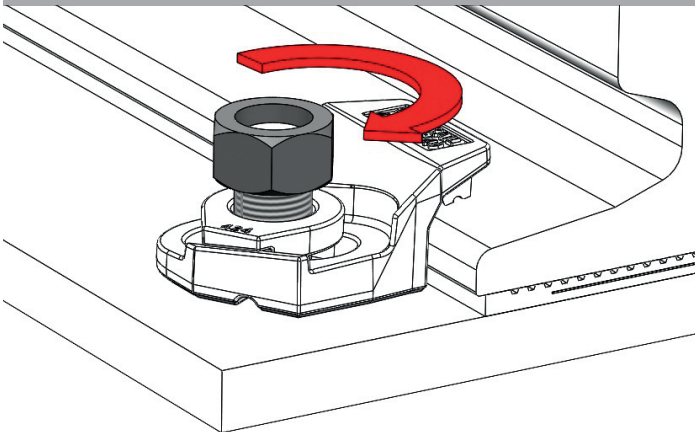
Place special washer(s) over bolt(s).

FIGURE 6



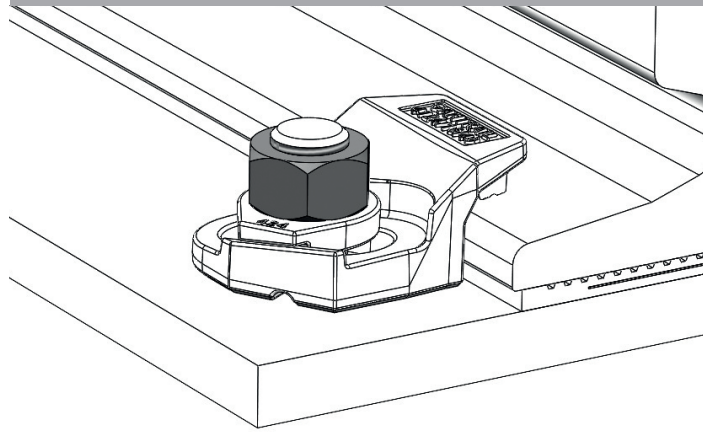
Make sure special washer(s) is fitted correctly with number facing up at back of clip.

FIGURE 7



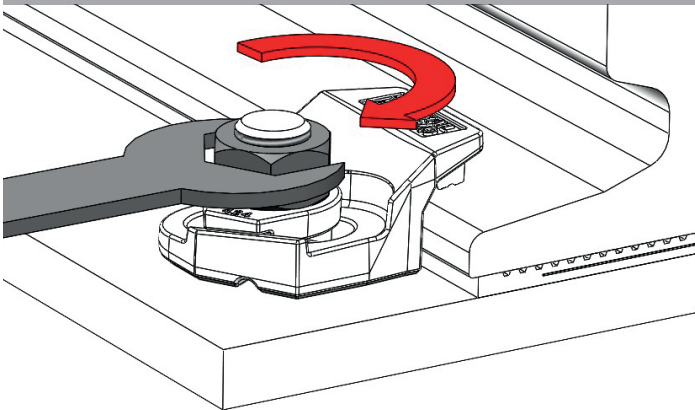
Run nut(s) down bolt(s).

FIGURE 8



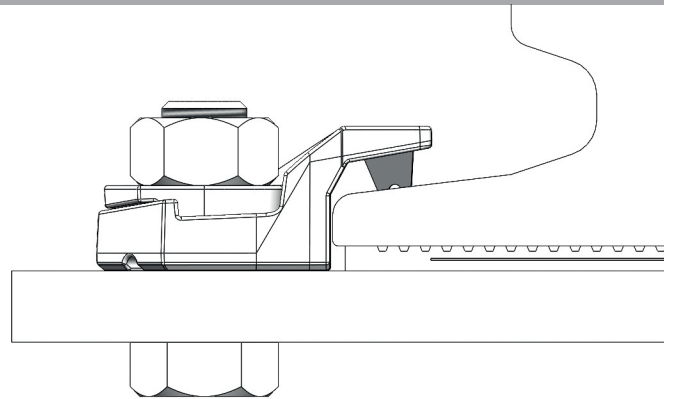
Nut(s) to make contact with special washer(s).

FIGURE 9



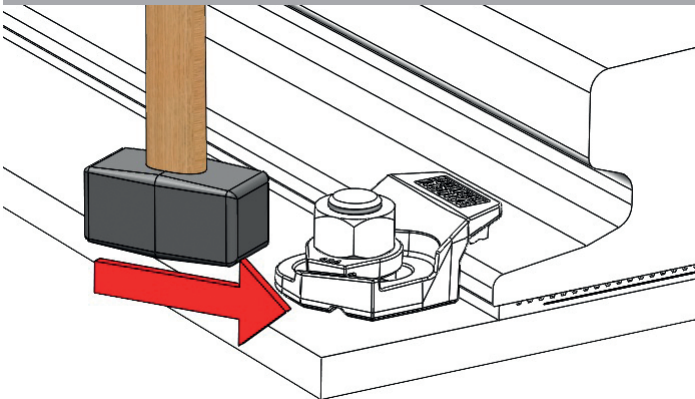
Tighten nut(s) with spanner.

FIGURE 10



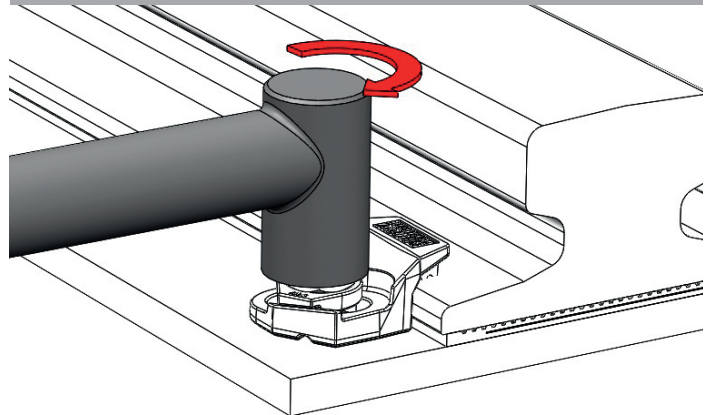
Tighten only until rubber 'nose' is compressed and bottom surface of clip in full metal contact with rail support. Do not apply full torque yet.

FIGURE 11



With hammer of about 1 kilo, tap clip body towards rail along direction of slot(s) in clip.

FIGURE 12



Tighten nut(s) to require torque given on product datasheet.

A world of crane rail expertise.

[www.gantrail.com](http://www.gantrail.com)



**Gantry Railing Ltd**  
 Unit 11A  
 Barnett Way  
 Barnwood  
 Gloucester GL4 3QA  
 United Kingdom

Tel: +44 (0) 1452 300688  
 E-mail: [info@gantrail.com](mailto:info@gantrail.com)

